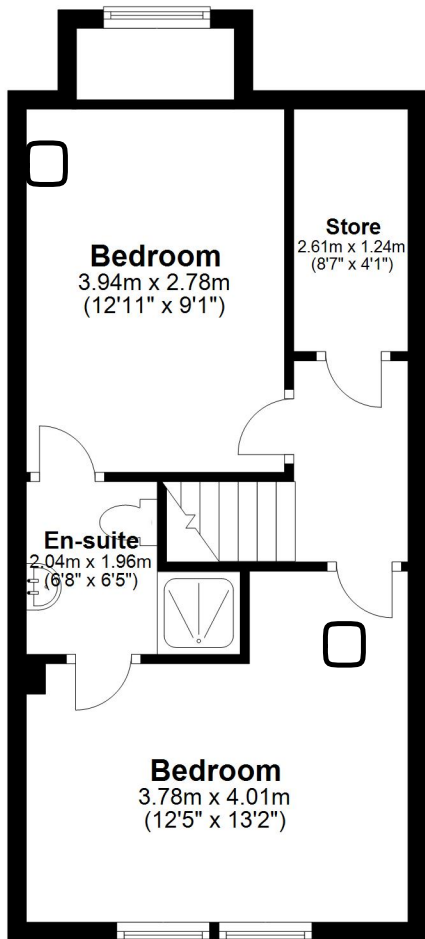


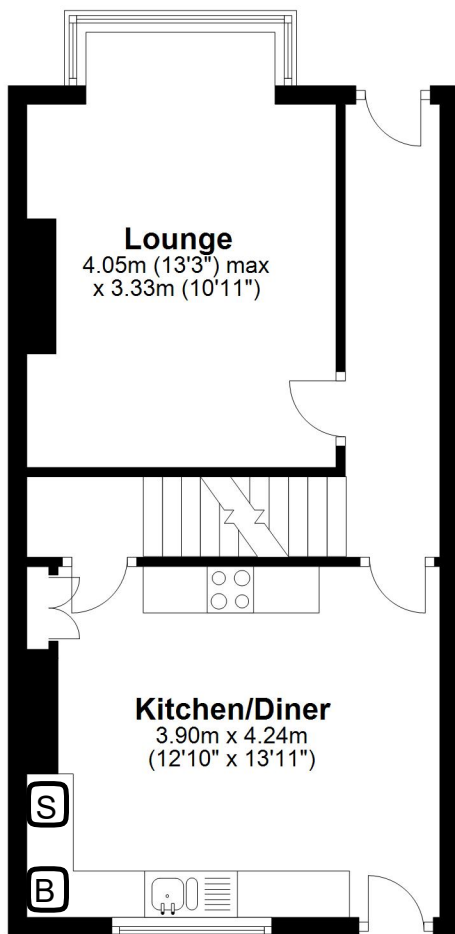
Lower Ground Floor

Approx. 36.4 sq. metres (392.3 sq. feet)



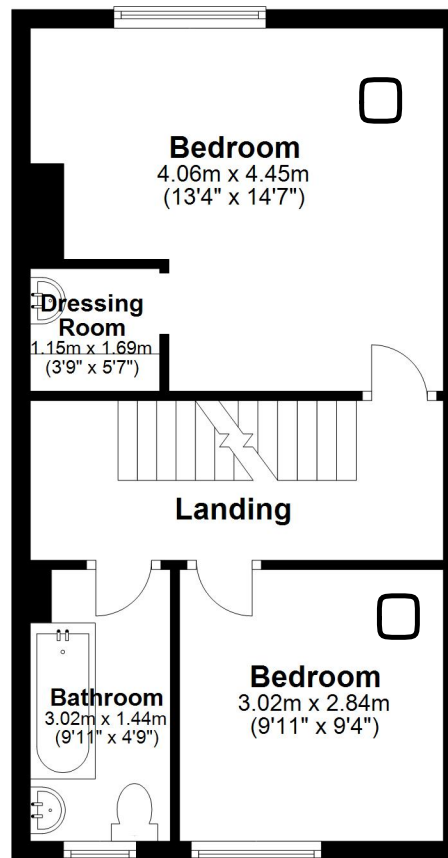
Ground Floor

Approx. 39.9 sq. metres (429.8 sq. feet)



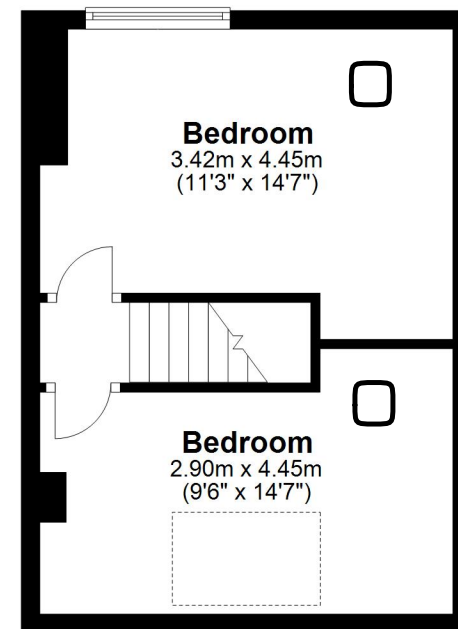
First Floor

Approx. 39.1 sq. metres (421.0 sq. feet)



Attic

Approx. 27.9 sq. metres (300.0 sq. feet)



Total area: approx. 143.4 sq. metres (1543.0 sq. feet)

Floor plans are for identification only. All measurements are approximate.
Plan produced using PlanUp.